

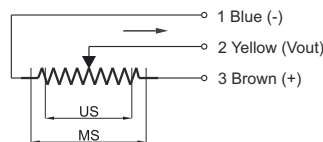
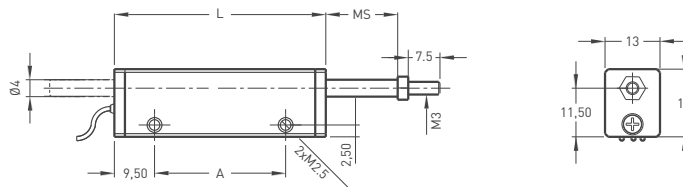
## Linear Potentiometer Ultra Slim Body Series

- Measuring range 10 - 25 mm
- Long mechanical life
- Excellent repeatability <0.01 mm
- Infinite resolution
- 2 kOhm: 10 ... 25 mm



### Technical specifications

|                             |                      |
|-----------------------------|----------------------|
| Measurement stroke          | 10 to 25 mm          |
| Linearity                   | ±%0,5 (<75 mm)       |
| Repeatability               | < 0.01 mm            |
| Resolution                  | Infinite             |
| Resistance                  | 2 kOhm: 10 ... 25 mm |
| Resistance tolerance        | ± %20                |
| Load resistance             | 100 kOhm min.        |
| Recommended cursor current  | <1 µA                |
| Permissible applied voltage | 28 VDC max.          |
| Electrical connections      | Cable output         |
| Displacement speed          | < 5 m/s              |
| Mechanical life             | 50 million movement  |
| Case dimensions             | 13x16 mm             |
| Case material               | Anodized aluminium   |
| Rod material                | Stainless steel      |
| Rod diameter                | Ø4 mm                |
| Mechanical fixing           | Screws               |
| IP degree                   | IP 54                |
| Operating temperature       | -20°C ... +80°C      |
| Storage temperature         | -30°C ... +90°C      |



|                           |    |    |    |
|---------------------------|----|----|----|
| LMT(mm)                   | 10 | 14 | 25 |
| US<br>(Usefull Stroke)    | 10 | 14 | 25 |
| MS<br>(Mechanical Stroke) | 13 | 17 | 28 |
| A<br>(Connection center)  | 26 | 31 | 41 |
| L<br>(Total Length)       | 45 | 50 | 60 |

| Model | Measurement stroke (mm) | Linearity [%]      | Resistance (kOhm) | Connector / Cable                                       |
|-------|-------------------------|--------------------|-------------------|---|
| LMTIS | 25                      | D                  | 2K                | 0M15  |
| LMTIS | 10 ... 25 mm            | D: ± %0,5 (<75 mm) | 2K: 2 kOhm        | 0M15: 0,15 meter cable (standard)<br>1M : 1 meter cable |