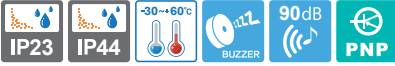


QT56MCL

LED Steady Tower Lights



Signal light that can be configured with 7 colors in 1 tower light

QT56MCL LED Steady

QT56MCL-BZ Built-in Buzzer LED Steady



QT56MCL series

Built-in buzzer output holes formed on the housing of the product.



QT56MCL Multiple Color LED Steady

- Helps reduce the costs of installation by reducing the space needed to emit seven color signals in a single warning light
- Elegant design with hexagon shaped metal housing
- Aluminum housing provides excellent durability
- Soft LED illuminates designated colors when on
- When off, milky translucent color lens provides a comfortable and stable viewing condition for workers in close proximity
- Folding type mount bracket can be utilized in various environments
- Built-in buzzer available (Volume : Max 90dB at 1m)
- Materials : Lens-PC, Housing-AI, Mounting bracket-AI
- Ambient operating temperature : -30°C to +60°C
- Protection rating : Standard type-IP44, Built-in Buzzer type-IP23

Model number	Voltage	Current	Certificates	Weight	Color
QT56MCL Steady	DC24V	Max 0.08A	-	0.45kg	7 Colors
QT56MCL-BZ Steady /w built-in buzzer			CE	0.48kg	

Signal/ Audible line current(Per each layer)

Voltage	DC24V
Signal line current	0.060A
Audible line current	0.020A

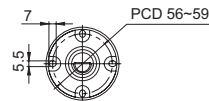
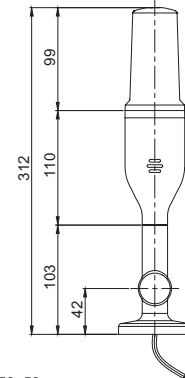
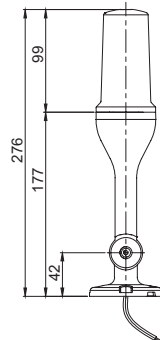


Technical Diagram

(Units : mm)

QT56MCL

QT56MCL-BZ



Wiring Instructions

- External signal line standard : Signal line 4P(R,G,B,K) threading, signal line standard UL1007 AWG22(0.3sq) 400mm
- Please refer to Wiring Instructions diagram to properly configure color options



Ordering Specification

QT56MCL	-	24
[Model number]		[Voltage]
<ul style="list-style-type: none"> • QT56MCL • QT56MCL-BZ 		<ul style="list-style-type: none"> • 24-DC24V

QT56MCL

LED Steady Tower Lights

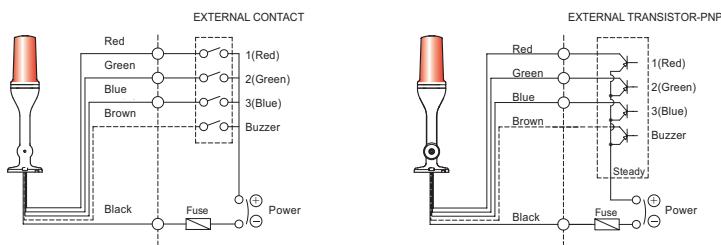


Wiring Instructions

- QT56MCL can be wired by using both external contact and transistor.
- When wiring with transistor, please make sure to use PNP transistor and follow the wiring instructions in the diagram below.



QT56MCL



< Wiring Configuration for Signal Color >

No.	Signal color	Wiring configuration
1	RED	1(RED)
2	GREEN	2(GREEN)
3	BLUE	3(BLUE)
4	AMBER	1(RED)+2(GREEN)
5	CYAN	2(GREEN)+3(BLUE)
6	PURPLE	1(RED)+3(BLUE)
7	WHITE	1(RED)+2(GREEN)+3(BLUE)

- External signal line standard : Signal line 4P(R,G,B,K) threading, signal line standard UL1007 AWG22(0.3sq) 400mm

Signal Color Options



[Red]



[Green]



[Blue]



[Amber]



[Cyan]



[Purple]



[White]

- 7 Color modes available via wiring

You can configure seven color signals by combining the 4 signal wires (red, green, blue, black) attached to the tower light.

ООО "РусАвтоматизация"

454010 г. Челябинск, ул. Гагарина 5, оф. 507
 тел. 8-800-775-09-57 (звонок бесплатный), +7(351)799-54-26, тел./факс +7(351)211-64-57
info@rusautomation.ru; русавтоматизация.пф; www.rusautomation.ru