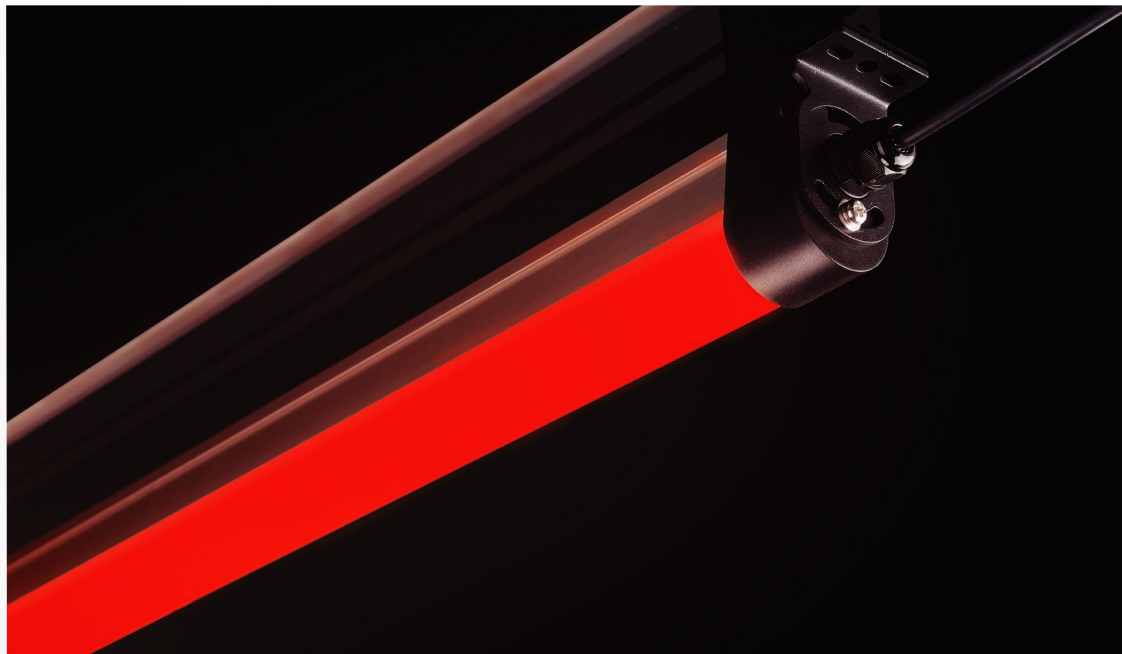


## SAL32 Industry Signal straight Light

- Protection class up to IEC IP67
- Large light-emitting area, high visibility, soft light, no harm to eyes
- Excellent electrical insulation, heat and cold resistance, suitable for various application environments
- The shell is made of corrosion-resistant and impact-resistant materials, which is durable and durable
- Rotating mounting brackets at both ends, convenient and firm, with adjustable angle



Series	End cap color	Glow color	Light source length	Tandem	Way out	Supply voltage
<b>SAL32</b>	<b>BK</b>	<b>RYGB</b>	<b>0300</b>	<b>N</b>	<b>LN</b>	<b>24</b>
	BK: black	RYGB: red, yellow, green, blue lamp beads, Among them, red, green and blue can be combined to achieve 7 colors	0300 : 300mm 0450 : 450mm 0600 : 600mm 0900 : 900mm 1200 : 1200mm	N: not support	LN: Scattered line QD: quick connector with wire	24 : DC 24V



## Specifications

### Supply voltage and current:

Supply voltage:  
DC 24V (maximum fluctuation 10%)  
Maximum current per color:  
40mA @DC 24V (150mm)

### Indication color:

Red, Yellow, Green, Blue (RYGB),  
each color is individually controlled;

### Electrical Characteristics:

Non-polar access

### Enter response time:

Indicates close/open 10 ms (max.)

### Connection method:

1 m loose wire cable terminated or 0.3 m  
long cable with M12 quick connector

### Operating environment:

Ambient temperature:  $-40^{\circ}\text{C}$  to  $50^{\circ}\text{C}$  ( $-40^{\circ}\text{F}$  to  $122^{\circ}\text{F}$ )  
Maximum ambient humidity: 95% at  $50^{\circ}\text{C}$  (non-condensing)

### Shell material:

Housing: 6061 aluminum alloy  
Translucent tube: PETG  
End caps on both sides: Polycarbonate

### Protection class:

IEC IP67

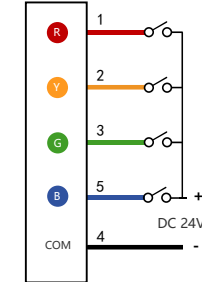
### Certification:



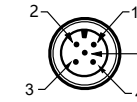
## Wiring Diagram

### Wiring method

The common terminal is connected to the black wire, and the color of the lamp body control line and the lamp body color correspond to each other.



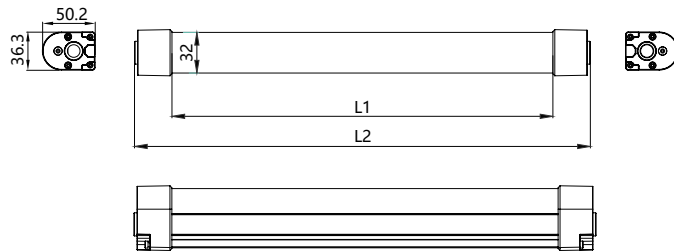
### Quick Connector



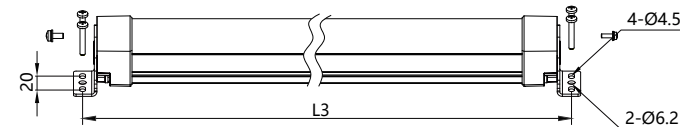
Male

## Dimensions

length specification	Light source length L1 (mm)	Lamp body length L2 (mm)	Installation length L3 (mm)
0300	300	359	376
0450	450	509	526
0600	600	659	676
0900	900	959	976
1200	1200	1259	1276



## Mounting



The SAL32 mounting bracket is externally fixed: the center hole diameter is  $\text{Ø}6.2\text{mm}$ , and the diameter of the two sides is  $\text{Ø}4.5\text{mm}$ . It is recommended to use M4-M6 screws.

## ООО "РусАвтоматизация"

454010 г. Челябинск, ул. Гагарина 5, оф. 507  
тел. 8-800-775-09-57 (звонок бесплатный), +7(351)799-54-26, тел./факс +7(351)211-64-57  
[info@rusautomation.ru](mailto:info@rusautomation.ru); [русавтоматизация.рф](http://rusавтоматизация.рф); [www.rusautomation.ru](http://www.rusautomation.ru)