

TRIME®-GW

TDR-

).

!

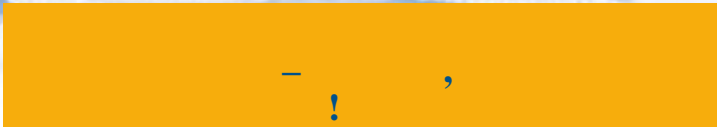


RusAutomation



TRIME®-GW





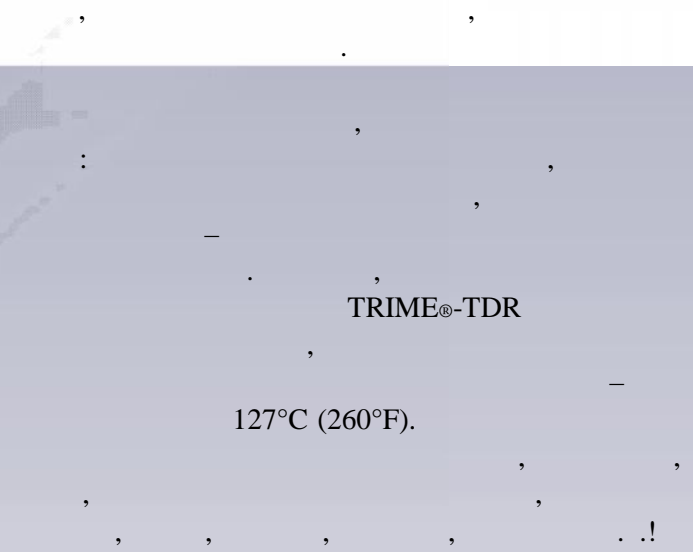
TRIME®-GR

TRIME®-GW –



TRIME®-GW

TRIME®-GW



TRIME®-TDR

127°C (260°F).



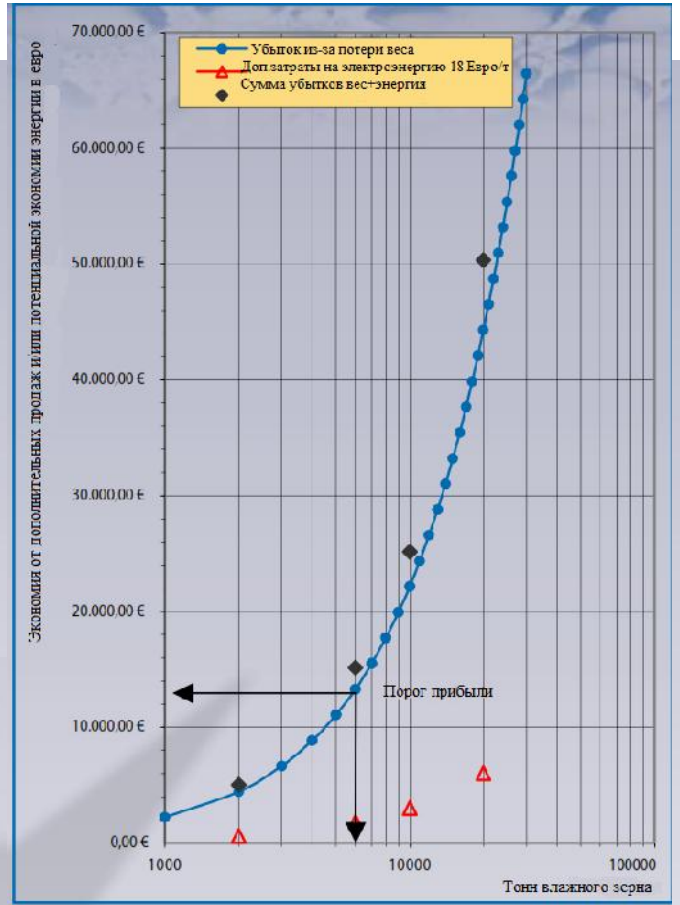
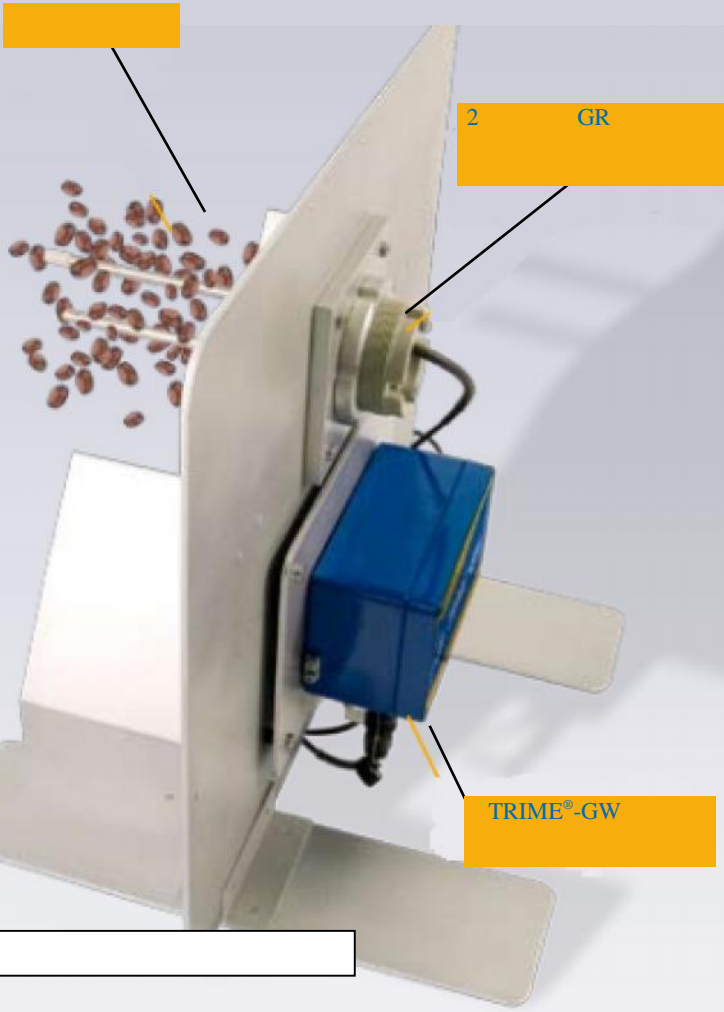
TRIME®



TDR-

TRIME®-GW

TRIME®-GW.



2%.




126 /

TRIME®-GW



TRIME®

TRIME®

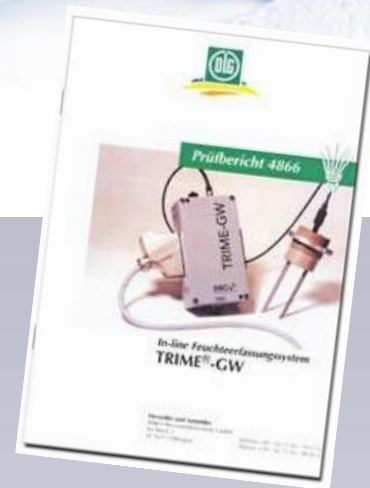
| | |
|---|--|
|  | <p>GR</p> <p>150</p> <p>2</p> <p>GR</p> <p>127°C</p> <p>(PEEK).</p> |
| <p>GR</p> | <p>GR: Ø 70 ; 75 ; : Ø</p> <p>8 ; : 150</p> |
|  | <p>WS3</p> <p>WS2</p> <p>WS3</p> <p>70%.</p> |
| <p>WS2 / WS3</p> | <p>WS2: 70 x 105 x 26 ; : Ø 10 ;</p> <p>: 150</p> |
|  | <p>GS1 GS2</p> <p>(, ,)</p> <p>GS1</p> <p>< 0,2 / ³.</p> |
| <p>GS1 / GS2</p> | <p>GS1: 280 x 70 x 40</p> <p>GS2: 250 x 40 x 30</p> |



DLG

(TDR-

) TRIME®, DLG (,), DLG, RIME®-GW ! DLG:



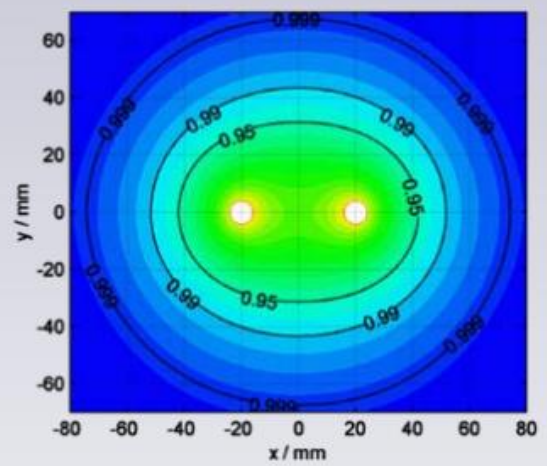
TRIME®-TDR

TRIME®-TDR

TRIME®

1-2

TRIME®



GR.

95% ()

TRIME®

TRIME®-TDR

ANHEUSER BUSCH



Anheuser-Busch Breweries (),

→ TRIME®-GW

→ . 180

stela

Stela Laxhuber GmbH & Co. KG (),

→ TRIME®-GW

FRA450

→ n . 280

P&G

Proctor & Gamble ()

→

NIDERA

Nidera ()

→

&

LIROS SWEDEN electronic

AB Liros ()

→

→

Liros



—

!

| | | | |
|-------------------|---------------------|------------|--------|
| | | : | |
| : | 9 ..36 | | |
| | | : | |
| | 150 @24 DC | 250 @12 DC | |
| : | | | |
| GR, WS2, GS1, GS2 | 0..45% | . | . |
| WS3 | 0..70% | . | . |
| : | 0..20%: | 0,6% | |
| | 20..45%: | 1% | |
| | 45..70%: | 2% | |
| : | +/- 0,3% | | |
| . | -10°C..60°C | | |
| : | | | |
| . | 0..127°C; | 150°C | ! |
| : | | | |
| | (20 20) | | |
| : | IMP232 MICRONET | RS232/V24 | |
| : | 0 4..20 = 0 .. 100% | . | |
| | (. : 300) | | |
| : | 2,5 | | |
| : | . | | , IP65 |
| : | (PEEK), IP68 | | |



DLG (1999,)



DLG ()

ООО “РусАвтоматизация”

454010 г. Челябинск, ул. Гагарина 5, оф. 507
 тел. 8-800-775-09-57 (звонок бесплатный), +7(351)799-54-26, тел./факс +7(351)211-64-57
info@rusautomation.ru; rusавтоматизация.рф; www.rusautomation.ru