



Thank you very much for selecting Autonics products.  
For your safety, please read the following before using.

**Caution for your safety**

- Please keep these instructions and review them before using this unit.
- Please observe the cautions that follow;
  - Warning** Serious injury may result if instructions are not followed.
  - Caution** Product may be damaged, or injury may result if instructions are not followed.
- The following is an explanation of the symbols used in the operation manual.
  - caution: Injury or danger may occur under special conditions.

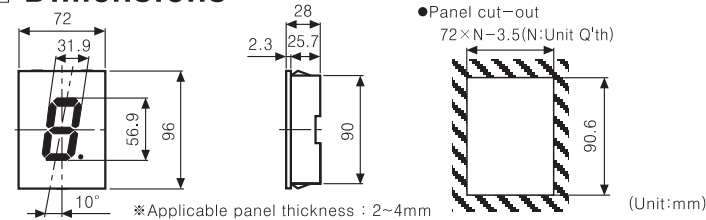
**Warning**

- In case of using this unit with machineries(Nuclear power control, medical equipment, vehicle, train, airplane, combustion apparatus, entertainment or safety device etc), it requires installing fail-safe device, or contact us for information on type required.  
It may result in serious damage, fire or human injury.
- Do not repair or checkup when power on.  
It may give an electric shock.

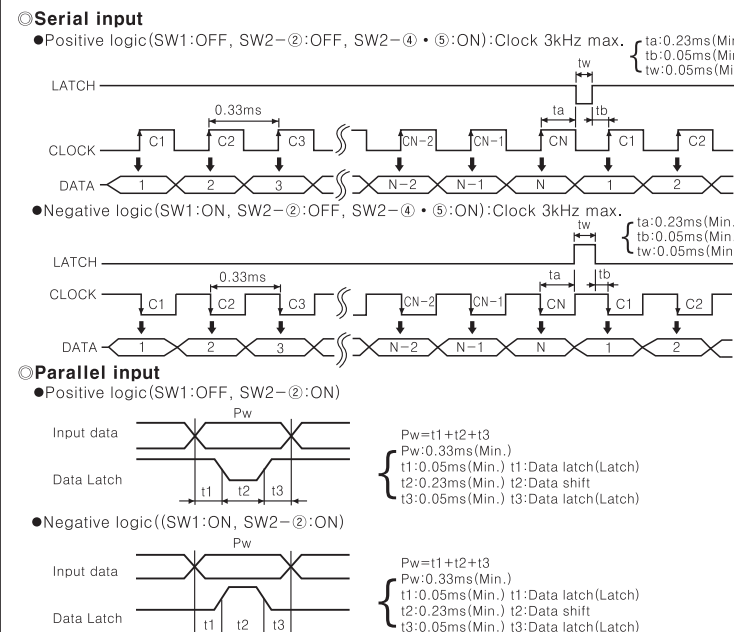
**Caution**

- This unit shall not be used outdoors.  
It might shorten the life cycle of the product or give an electric shock.
- Please observe specification rating.  
It might shorten the life cycle of the product and cause a fire.
- In cleaning the unit, do not use water or an oil-based detergent.  
It might cause an electric shock or fire that will result in damage to the product.
- Do not use this unit at place where there are flammable or explosive gas, humidity, direct ray of the sun, radiant heat, vibration, impact etc.  
It may cause explosion.
- Do not inflow dust or wire dregs into inside of this unit.  
It may cause a fire or mechanical trouble.

**Dimensions**



**Input timing**

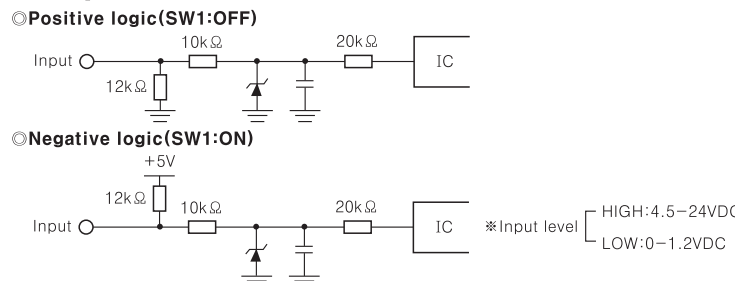


\*The above specifications are subject to change and some models may be discontinued without notice.

**Specifications**

Model	D1SC-N
Indication	Red(7 Segment)
Power supply	12-24VDC
Allowable operation voltage	90 to 110% rated voltage
Current consumption	Max. 70mA
Max. clock speed	Max. 3kHz[When duty rate is 1:1(ON:OFF)]
Input logic	Selectable positive or negative logic by slide switch
Input impedance	12kΩ
Input level	[High] : 4.5-24VDC, [Low] : 0-1.2VDC
Insulation resistance	100MΩ Min.(at 500VDC)
Noise strength	The square wave noise by simulator(pulse width:1μs) ±300V between power terminals, ±300V between input terminals
Ambient temperature	0 to 60°C (at non-freezing status)
Storage temperature	-10 to 85°C (at non-freezing status)
Ambient humidity	35 ~ 85%RH
Weight	Approx. 100g

**Input circuit**

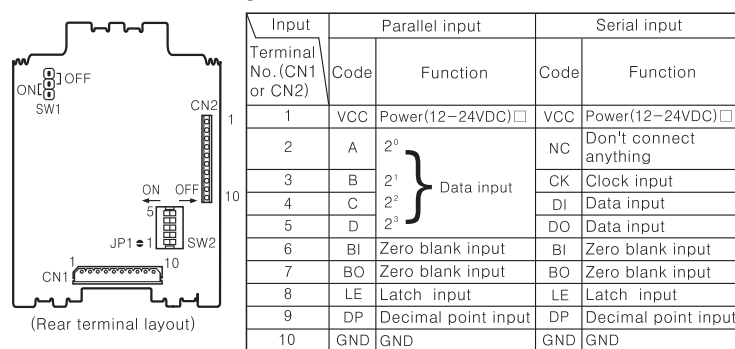


**Input data chart**

Indication				Negative input					Positive input				
Minus		7 Segment		D	C	B	A	LATCH	D	C	B	A	LATCH
Hexa decimal	Decimal	Hexa decimal	Decimal										
Blank	Blank	0	0	H	H	H	H	H	L	L	L	L	L
Blank	Blank	1	1	H	H	H	L	H	L	L	L	H	L
**	-	2	2	H	H	L	H	H	L	L	H	L	L
-	-	3	3	H	H	L	L	H	L	L	H	H	L
-	-	4	4	H	L	H	H	H	L	H	L	L	L
-	-	5	5	H	L	H	L	H	L	H	L	H	L
-	-	6	6	H	L	L	H	H	L	H	H	L	L
Blank	Blank	7	7	H	L	L	L	H	L	H	H	H	L
-	-	8	8	L	H	H	H	H	L	L	L	L	L
-	-	9	9	L	H	H	L	H	H	L	H	L	L
-	Blank	R	Blank	L	H	L	H	H	L	L	H	L	L
-	Blank	b	Blank	L	H	L	L	H	L	L	H	H	L
Blank	Blank	c	Blank	L	L	H	H	H	H	L	L	L	L
-	Blank	d	Blank	L	L	H	L	H	H	H	L	H	L
-	Blank	e	Blank	L	L	L	H	H	H	H	L	L	L
-	Blank	f	Blank	L	L	L	L	H	H	H	H	L	L
HOLD	HOLD	X	X	X	X	X	X	L	X	X	X	X	H

\*"X" : Don't care, \*\* - : Minus indication  
\*In case of indicating minus(-), JP1 must be OFF

**Terminal layout and Function**



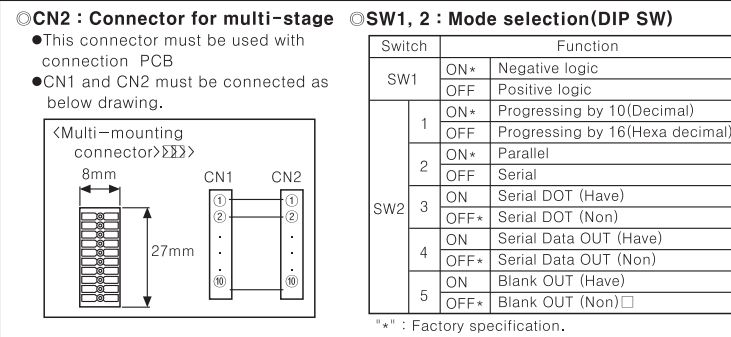
**JP1 : Selection of minus(-) indication**

JP1	Indication	(ON)	(OFF)
ON	7 Segment		
OFF	Minus		

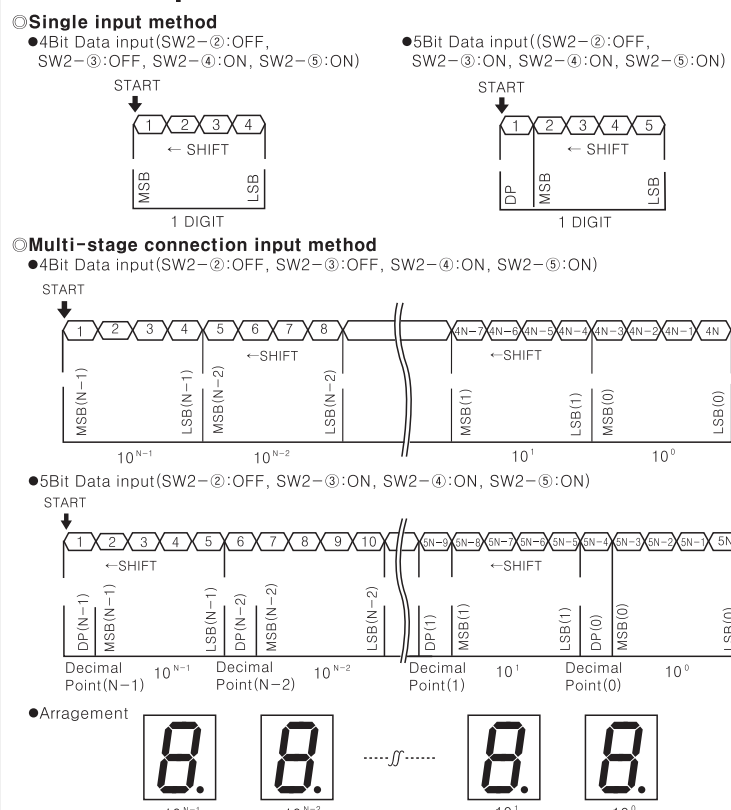
\*JP1=ON: Factory specification.

**Connector specification(CN1)**

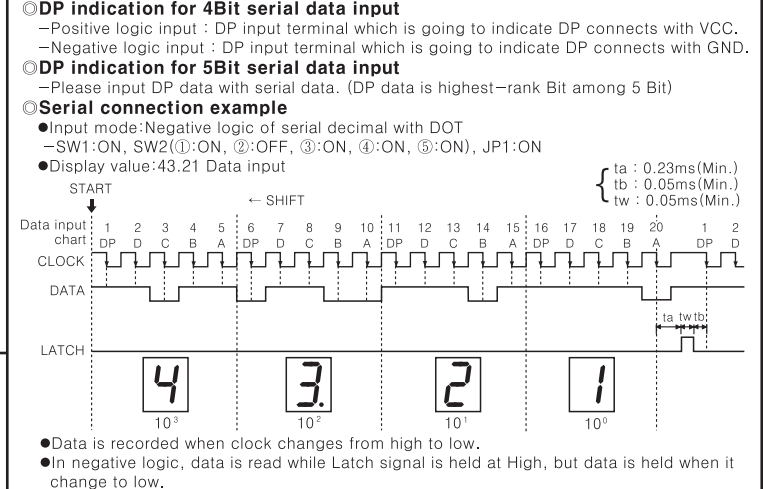
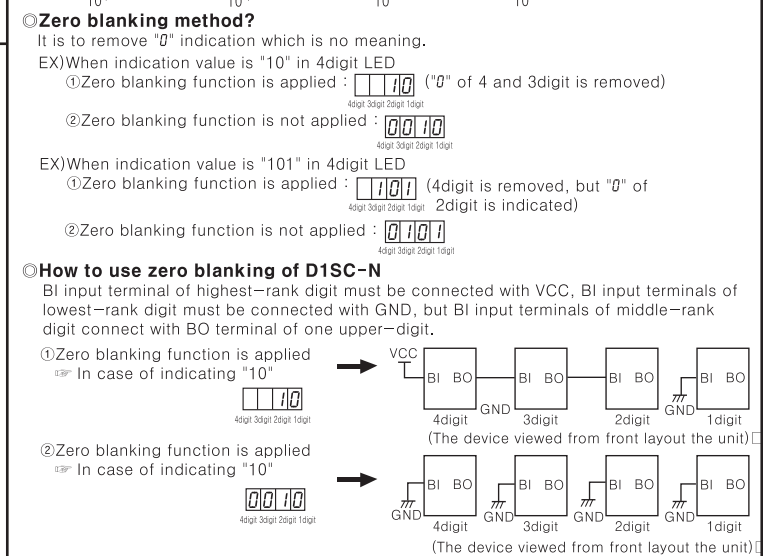
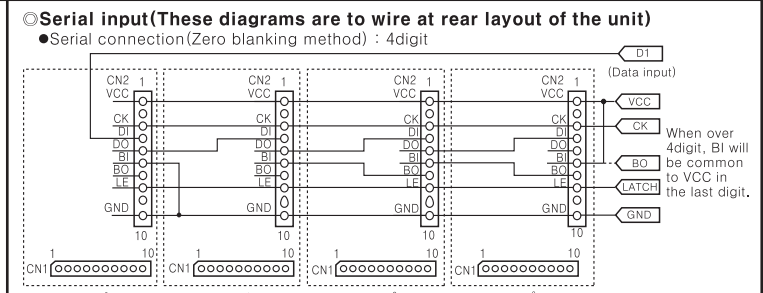
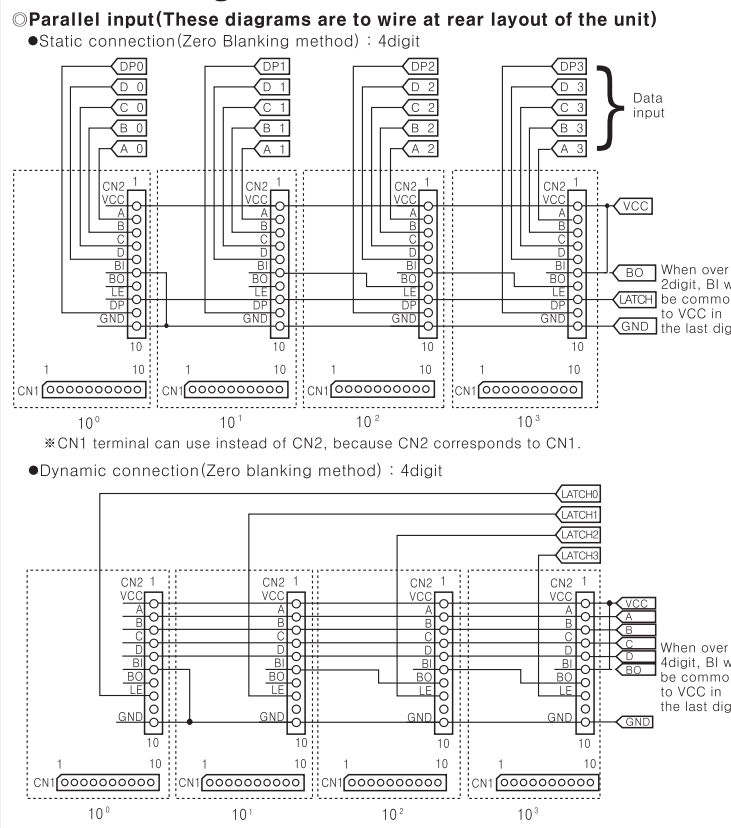
- Connector maker: Korea Morex.
- Housing : 5264-10
- Header : 5264-10A(Straight)
- Terminal : 5263(PBT)
- Using cable specification
  - AWG#22 ~ 28(Cable diameter : φ1.9mm Max.)
  - Shedding length of wire cover : 2.4 ~ 2.9mm



**Data input method for serial**



**Multi-stage connection method**



**Caution for using**

- It must be mounted on panel. It may give an electric shock.
  - Input signal line
    - Shorten the cable distance between the sensor and this product.
    - Please shielded wire for input signal needed to be long.
    - Please wire input signal line separated from power line.
  - Dielectric or insulation test of control panel, when this unit is installed on it
    - Separate the unit from control panel circuit.
    - Short circuit all terminals of the unit.
    - Place where there are severe vibration or impact.
    - Place where strong alkalis or acids are used.
    - Place where there are direct ray of the sun
    - Place where machineries has strong magnet field or electric noise are used near by.
  - The model is designed to use under the following environment conditions:
    - It shall be used indoor
    - Pollution Degree 2.
    - Altitude Max. 2000m.
    - Installation Category II.
- \*It may cause malfunction if above instructions are not followed.**

**Main product**

- Photoelectric sensors
- Fiber optic sensors
- Door sensors
- Door side sensors
- Area sensors
- Proximity sensors
- Pressure sensors
- Rotary encoders
- Connector/Sockets
- Switching mode power supplies
- Control switches/Control Buzzers
- I/O Terminal Blocks & Cables
- Stepper motors/drivers/motion controllers
- Graphic/Logic panels
- Field network devices
- Laser marking system(Fiber, CO<sub>2</sub>, Nd:YAG)
- Laser welding/soldering system
- Temperature controllers
- Temperature/Humidity transducers
- SSR/Power controllers
- Counters
- Timers
- Panel meters
- Tachometer/Pulse(Rate) meters
- Display units
- Sensor controllers

**RusAutomation**

**ООО "РусАвтоматизация"**

454010 г. Челябинск, ул. Гагарина 5, оф. 507  
тел. 8-800-775-09-57 (звонок бесплатный),  
тел.: (351)799-54-26, тел./факс (351)211-64-57  
info@rusautomation.ru; www.rusautomation.ru  
rusavtomatizatsiya.ru