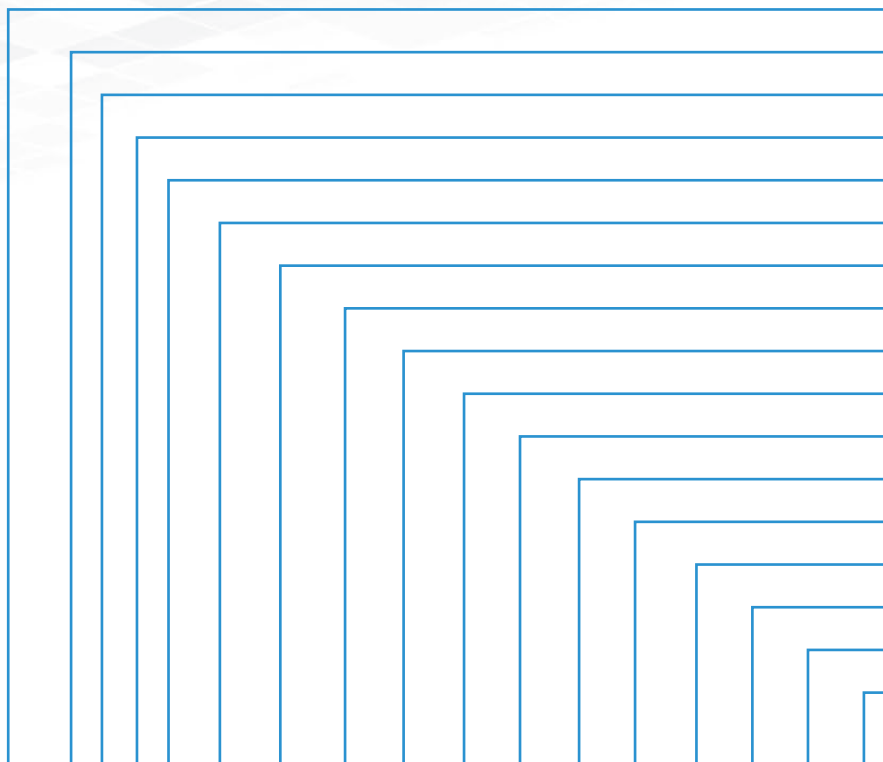


MINERAL INSULATED THERMOCOUPLES



Elimko Mineral Insulated Thermocouple Coding



Drawing Number
1 Element Number
2 Element Type
3 Protective Sheath Diameter
4 Protecting tube
5 Immersion Length
* Cable Length
* Cable Type
* Socket
* Thread
* Head
* Element
* Converter
* Surface Coating
* Flange
* Thermowell
* Certificate
* IN = Manufacturing Number

MI01 - 1 K 60 I - 50 - K10 - SS - ME - G1 - Ex - TZ - Tr - TH - F - W - S

Drawing Nr. 1 2 3 4 5 * * * * * * * * * * * * * *

STANDARD CODE

ADDITIONS TO STANDARD CODE

Note: IN = Manufacturing number is given by Elimko for special case.

STANDARD CODE

It is coded with digits and letters containing the drawing number and 5 separate pieces of information.

ADDITIONS TO STANDARD CODE

In addition to the technical specifications contained in the standard codes, the required features are listed in the "ADDITIONS TO STANDARD CODE". These features are given below. In this section only needed features are written. See examples.

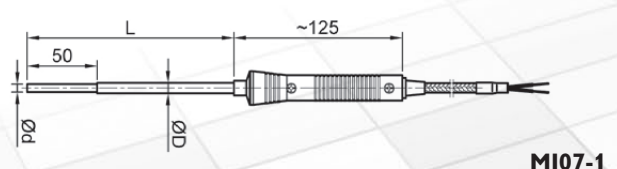
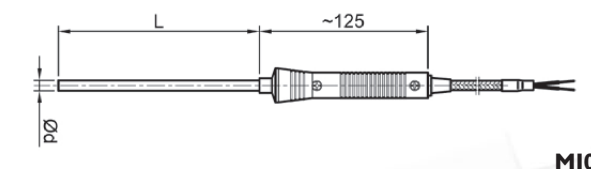
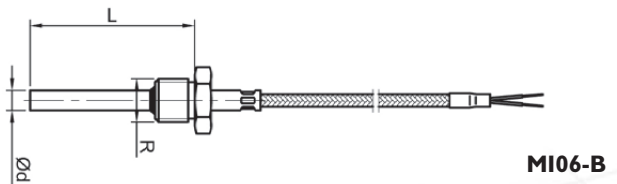
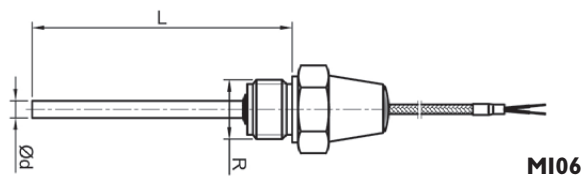
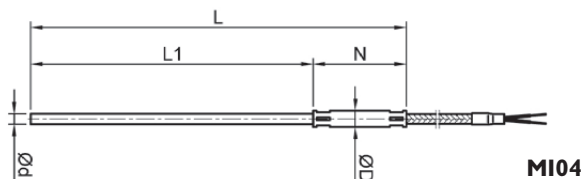
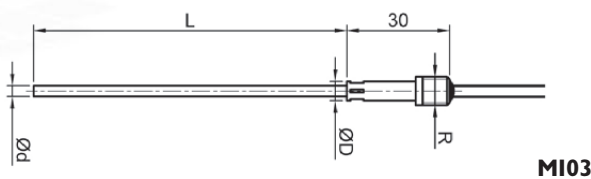
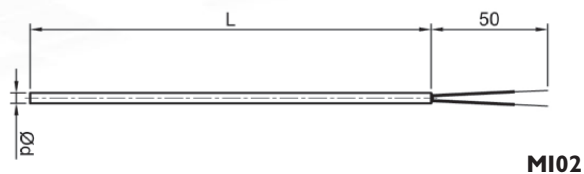
SPECIAL CASES

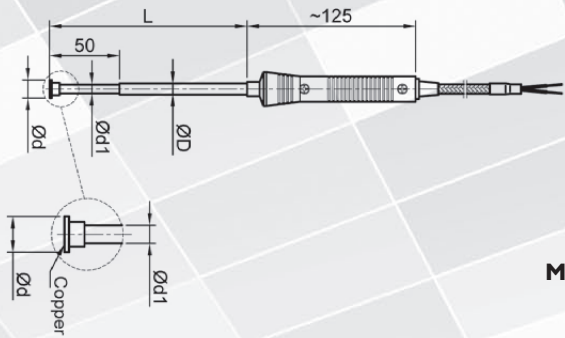
Additional features which are not fully defined with "STANDARD CODE" and "ADDITIONS TO STANDARD CODE" are coded with special drawing number. This code is expressed with IN=Manufacturing number.

Drawing Number	MI01, MI02, MI03, MI04, MI05, MI06, MI07, MI07-1, MI07-H, MI07-HD, MI07-I, MI07-Y, MI07-YA, MI08, MI21, MI22, MI30-R, MI30-RK, MI30-N, MI30-NU, MI30-NUN	Thermocouple forms are numbered with different drawing numbers.
1- Element Number	(1) Single Element (2) Double Element	Thermocouple element number is written on the 1 st digit.
2- Element Type	STANDARD CODE T Cu-Const IEC 60584 K NiCr-Ni IEC 60584 J Fe-Const IEC 60584 N Nicrosil-Nisil IEC 60584 E Cr-Const IEC 60584	Corresponding letter according to the thermocouple type is written on the 2 nd digit.
3- Protecting tube diameter	05 0.5 mm 60 6.0 mm 10 1.0 mm 80 8.0 mm 15 1.5 mm 90 9.0 mm 20 2.0 mm 30 3.0 mm 45 4.5 mm	It is written with the figure opposite to the mineral insulated thermocouple diameter selected by considering temperature limits and ambient temperatures to the 3 rd digit. Mineral Insulated thermocouple diameters have two digits.
4- Protecting tube	P Stainless I Inconel L 1.4749	
5- Immersion Length (cm)	05 50 200 50/74 L ₁ =50 L=74 10 71 ... 71/91 L ₁ =71 L=91 16 100 18 120 25 140 35 160 Note: These sizes given in mm type. Only inset lengths given in mm type.	Thermocouple length is written on the 5 th digit. Thermocouple Immersion length to ensure correct measurement should be minimum 6 – 10 times of the protecting tube diameter. Immersion length (L ₁) / total length (L) is written on the length digit for types with thread.
* Cable Length	K05 50 cm K20 2 m K10 1 m K25 2.5 m K15 1.5 m ...	
* Cable Type	SS Silicon + Silicon CCB Fiber Glass + Fiber Glass + Shielding CC Fiber Glass + Fiber Glass SCB Silicon + Fiber Glass + Shielding TT Teflon + Teflon PP PVC + PVC	Note: Contact Elimko for other cable types.
* Socket	ME Miniature Male SE Standard Male MD Miniature Female SD Standard Female	Note: Contact Elimko for other sockets.
* Thread	G1 1NPT M10x1 G½ ½NPT M12x1 G¼ ¼NPT M12x1.5 G⅛ ⅛NPT M27x2 G1 S Adjustable 1NPT S Adjustable M10x1 S Adjustable	If thread exists it is indicated with the letter given in the standards. Note: Some of the standards are written on this area. Manufacturing takes place with all standards. Please specify your request.
* Head	A Type A head C2 C2 head Ex Exxtype head ½" B Type B head P Plastic head Ex-proof certified C1 Type C1 head SS Stainless head	Please specify the type of the head.

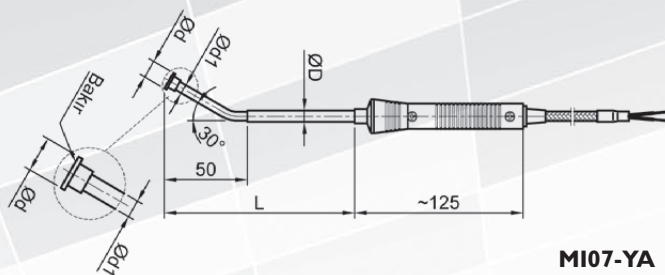
* Element Type	T Grounded HD Air Perforated YA Surface Angle TZ Ungrounded UA Open Ended YU Surface Open Ended H Hair Slot Y Surface V Resistant to vibration I Needle Type YD Surface Spherical	Details on thermocouple tip point are given with their codes.
* Converter	Tr Elimko converter installed Tr/I Elimko insulated converter installed Tr/k As to use Elimko converter Tr/d Other brand converter to be installed Tr/dk As to use other brand converter	Elimko or other brand converters can be installed in the thermocouple head.
* Surface Coating	TK Teflon coating TH Teflon hose STK Stellite coating	The protecting tube can be coated with known materials. If coating exists coding is made according to its type.
* Flange	F Flange exists. Flange codes valid.	If letter F is written on flange digit that means a flange exists. Refer to catalog for flange details.
* Thermowell	W Thermowell exists. Thermowell codes are valid.	If W is written on Thermowell digit that means a Thermowell exists. Refer to Elimko catalog for Thermowell details.
* Certificate	S calibration certificate	Note: Apply Elimko for your certificate.

Elimko Mineral Insulated Thermocouples

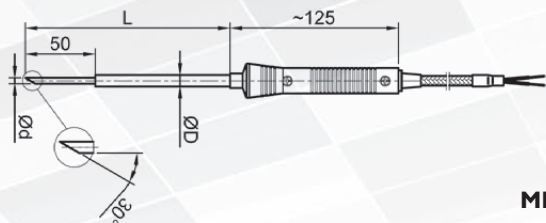




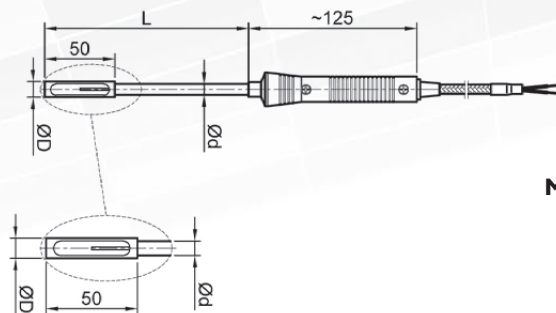
MI07-Y



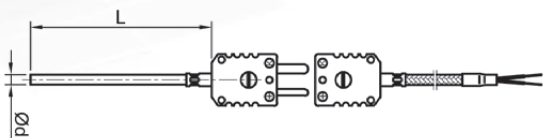
MI07-YA



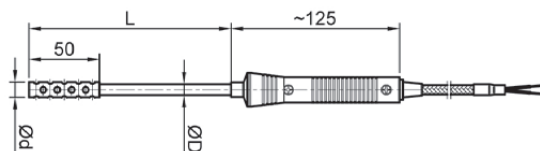
MI07-I



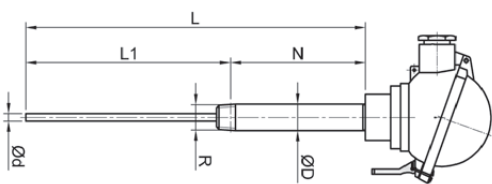
MI07-H



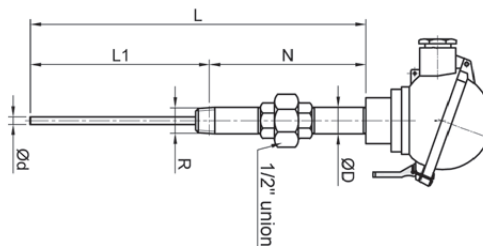
MI08



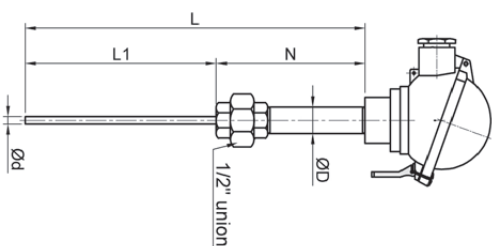
MI07-HD



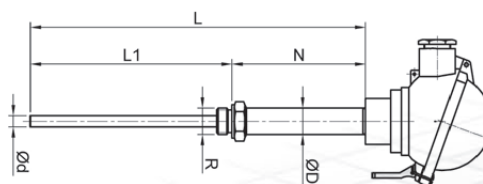
MI30-N Nipple



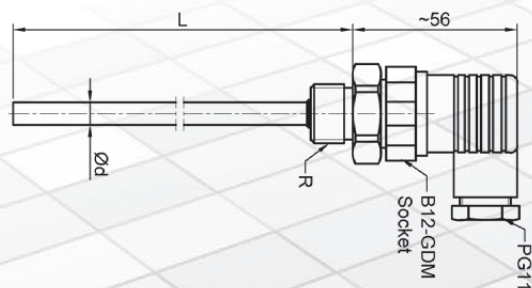
MI30-NUN Nipple-Union-Nipple



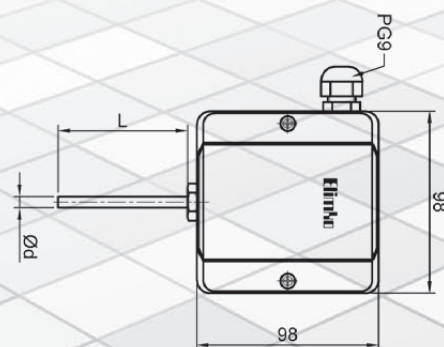
MI30-NU Nipple-Union



MI30-R Flat Thread



MI21



MI22