

OPERATING MANUAL

SH1S / SH1TS / SH2S / SH2TS

OPERATING MANUAL

Heavy duty Strobe Light

Thank you for purchasing Q.Light product. Please read this manual carefully before installing this product for safe and long use.

1 Product Feature

- Taking Xenon lamp with AL housing of Long durability.
- Suitable for a bright place and a signal transfer for a long distance with a strong strobe signal light.
- Easy to change its lamp by taking a connector type lamp.
- Material: Filter-PC, Body- DIECAST AL, Protection cage-SUS316L
- Flashes(Flashing Type): 60~80/Min.
- Protection Class : IP56

2 Specification & External View Drawing

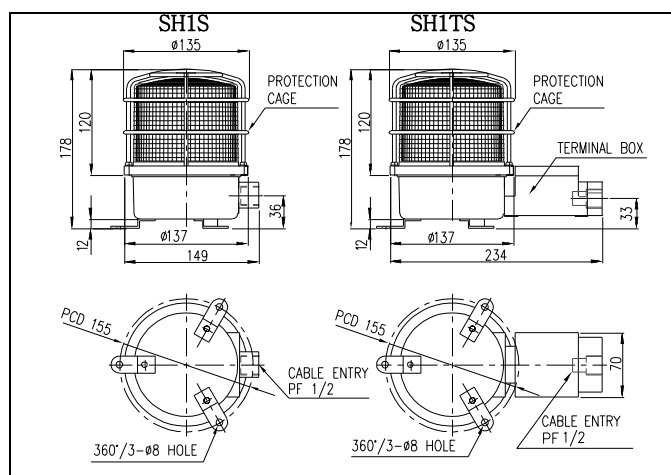
1) SH1S / SH1TS

• General Specification

Model	Rated Voltage	Current	Weight	Flashes	Color
SH1S	DC12V	0.722A	1.13Kg	60~80/min.	RED-R AMBER-A GREEN-G BLUE-B
	DC24V	0.388A	1.13Kg		
SH1TS (add terminal box)	AC110V	0.133A	1.11Kg		
	AC220V	0.106A	1.11Kg		

* Upper weight is SH1S's weight which is not added the protection cage(0.25kg) and the terminal box(0.46kg).

• External View Drawing



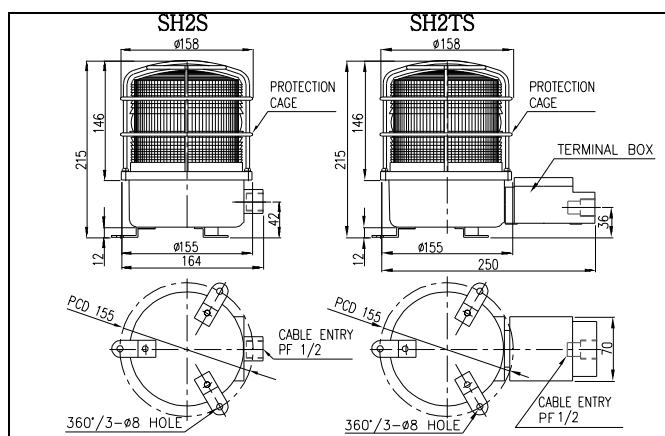
2) SH2S/SH2TS

• General Specification

Model	Rated Voltage	Current	Weight	Flashes	Color
SH2S SH2TS (add terminal box)	DC12V	0.722A	1.21Kg	60~80/min.	RED-R AMBER-A GREEN-G BLUE-B
	DC24V	0.388A	1.21Kg		
	AC110V	0.133A	1.19Kg		
	AC220V	0.106A	1.19Kg		

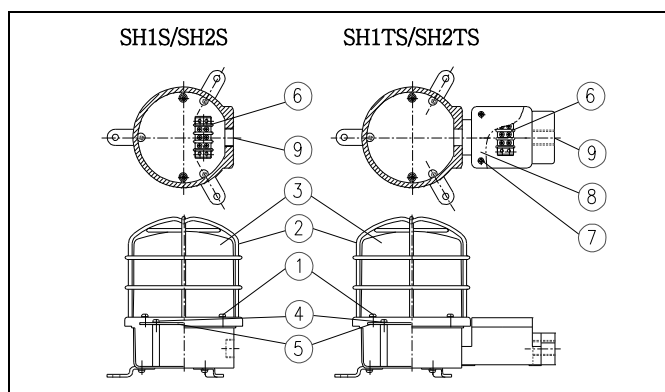
* Upper weight is SH2S's weight which is not added the protection cage(0.29kg) and the terminal box(0.46kg).

• External View Drawing



3 Wiring Instruction

This product has a terminal port for connecting power line in its body(SH1S/SH2S) or terminal box(SH1TS/SH2TS).



1) SH1S/ SH2S

- Release the protection cage bolts(M4-4EA)① and take off the lens ring(protection cage)② and lens③.
- Release the assembling board bolts(M4-3EA) ④ and take off the board⑤ then check terminal port⑥.

2) SH1TS / SH2TS

Release terminal port cover bolts(M4-4EA)⑦ and take off terminal port cover⑧ then check terminal port⑥.

OPERATING MANUAL

3) Connect power line

- In case of product using AC voltage, connect the line without Polarity(wire color).
- In case of product using DC voltage, black line is negative(-).

4) the end of line

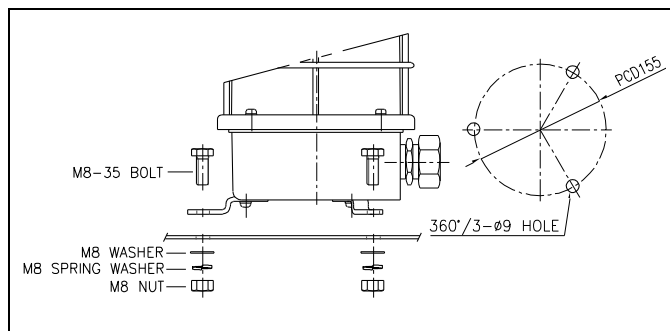
- Please use the “O” or “U” shaped terminal for the end of line for a safety use.

5) Line entry

Please use cable entry^⑨ with water-proof connector(SH1S/SH2S-flexible connector#16, SH1TS/SH2TS-15C nipple is supplied as a standard) or cable grand to keep airtight.

4 Mounting

- This product was manufactured with anti-dust and water proof structure for outdoor use. Mount at the place where exist low vibration, low impact, low moisture and low dust on the vertical standing direction.
- Please make a hole by a drill where you need to attach our product and refer to below picture for a hole size. (Make sure PCD from external view drawing.)
- Fix the product by using another nuts(M8-3EA).



5 Change Lamp

1) * Warning!

Must turn off power supply and change bulb after 1 minute at least.

- Xenon lamp work with a high voltage, if you touch a assembling board or lamp without power-off, you may receive an electric shock.

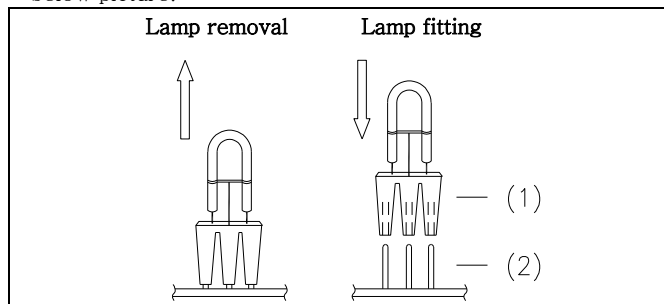
2) Lens Removal

Release the bolts^① and take off the lens from the body.

3) Change Lamp

- Our company's xenon lamp (1) is made as a connector type lamp. If you pull out with a small strength, it can be separated easily.

- Please fit the lamp by checking a connector pin location (2) as below picture.



4) Lens Assembling

Assemble the product in reverse order of separating.

6 Caution

- This is designed for explosion proof and water proof/dust proof product. **When releasing the product for checking, connecting etc, must keep airtight by making sure bolts.**
- Use explosion-proof cable grand to keep airtight which is satisfied with explosion-proof regulation. **If the line entry is not kept airtight and put outdoor**, this can cause a product damage by moisture and dust.
- If using voltage is seriously higher or lower than rated voltage, it can reduce the self-life of the product or can cause a problem on product operating. Make sure the using voltage does not exceed +/-5% of the rated voltage.
- If lens or body of the product is contaminated by chemicals such as thinner, benzene, the product can be damaged, discolored or deformed. Please be careful.
- Do not give strong impact to the product. It can be a reason of wire disconnection or short circuit.

7 Trouble shooting

Situation	Main reason	Solution
Lamp non-working	Damage on Lamp	Change Lamp
	Lamp connector badness	re-connecting Lamp connector
	No Power Supply	Making Sure Power Supply
Strobe working irregularly.	Supplying Voltage Lower than Rated Voltage	Making Sure Using Voltage
	Wrong Operating L/LF Selection Switch	Convert L/LF Selection Switch