

# S80 series

## Ø80mm LED Steady/ Flashing Signal Lights



### S80AL LED Steady/ Flashing Signal Light

- Equipped wall mount allows for easy assembly. Additional mounting brackets not required
- Maintenance reduced with longlasting LED light source
- Buzzer not allowed
- Terminal block designed inside the side mount bracket enables easy wiring
- Built-in buzzer available (Volume : Max 90dB at 1m)
- Flashing rate : 60-80 flashes/min
- Materials : Lens-AS, Housing-ABS, Reflector-Heat resistant ABS
- Ambient operating temperature : -30°C to +50°C
- Protection rating : IP44
- Compliant with RoHS directive



#### Specifications

Model number	Voltage	Current	Certificates	Weight	Color
S80AL	DC12V-24V	Max.0.125A	-	0.26kg	<ul style="list-style-type: none"> <li>• R-Red</li> <li>• A-Amber</li> <li>• G-Green</li> <li>• B-Blue</li> </ul>
	AC110V	0.035A		0.35kg	
	AC220V	0.020A		0.35kg	

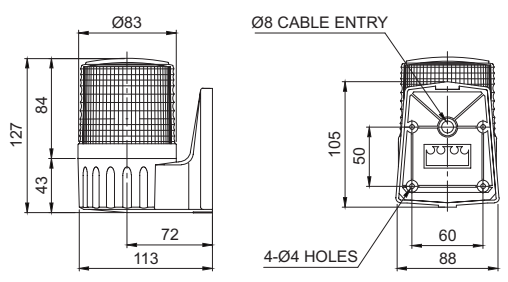
#### Technical Diagram

(Units : mm)



S80AL

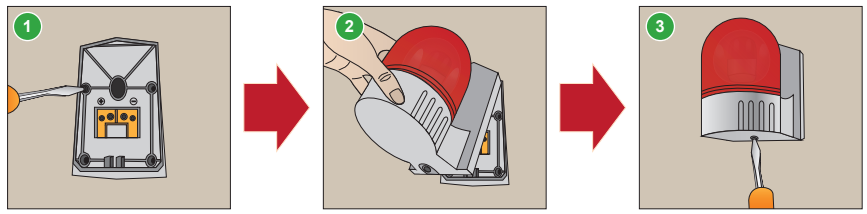
S80AL



#### Wiring Instructions

- Attach the power supply wire to the terminal block
- Product can be wired regardless of polarity

#### Mounting Instructions



- 1 Secure the base plate to the mounting surface, and the power line to the terminal block
- 2 Mount the warning light by inserting the ring(hook) into the upper part of the base plate
- 3 Screw in the bolt at the base of the mounting bracket to complete assembly

#### Ordering Specification

<b>S80AL</b>	-	<b>BZ</b>	-	<b>110</b>	-	<b>R</b>
[Model number]		[Buzzer option]		[Voltage]		[Color]
• S80AL		• None • No buzzer • BZ • Built-in buzzer		• 12-DC12V • 24-DC24V • 110-AC110V • 220-AC220V		• R-Red • A-Amber • G-Green • B-Blue



#### S80A series enable easy wiring

S80A series enables easy wiring with its terminal block attached to the fixed base plate. With this system the contacts in the housing sends power directly to the terminal block.