



Model Number

ECN20IL-*

Cable pull

Features

- **Robust aluminum drum housing**
- **Compact design**
- **Bellows with steel tip**
- **Wide range of mounting options**
- **Up to 5 m of measuring cable**
- **Housing can be coated as an option (Hart Coat)**
- **Rust and acid-resistant measuring cable**

Description

Cable pull with a robust design to suit a wide range of requirements.

Technical data

General specifications

Device type	Industrial Line
Measuring range	1250 ... 5000 mm
Construction type	55 mm, 80 mm, 130 mm
Repeat accuracy	0.1 %
Hysteresis H	0.1 %
Linearity	± 0.1 %

Functional safety related parameters

B _{10d}	300000
------------------	--------

Ambient conditions

Ambient temperature	-30 ... 70 °C (-22 ... 158 °F)
---------------------	--------------------------------

Mechanical specifications

Rope diameter	0.55 mm
Bending radius	min. 14 mm
Breaking force	min. 330 N
Retraction speed	8 m/s
Degree of protection	IP64

Material

Housing	anodized aluminum or aluminum with Hart Coat coating
Rope	Stainless steel 1.4401/316
Life span	up to 10 ⁶ Cycles

General information

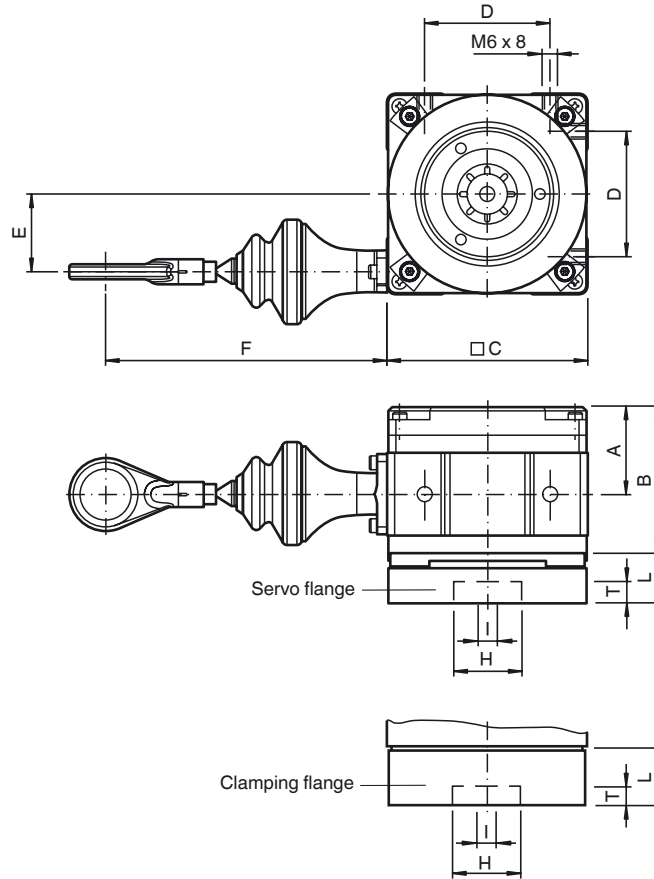
Scope of delivery	Shaft coupling for mounting a rotary encoder depending on the flange type , Mounting clips , 3 x M4 x 8 bolts for mounting the adapter , Sealing elements (various seals for mounting a rotary encoder) , Hexagon socket wrench, 1.3 AF
-------------------	---

Accessories

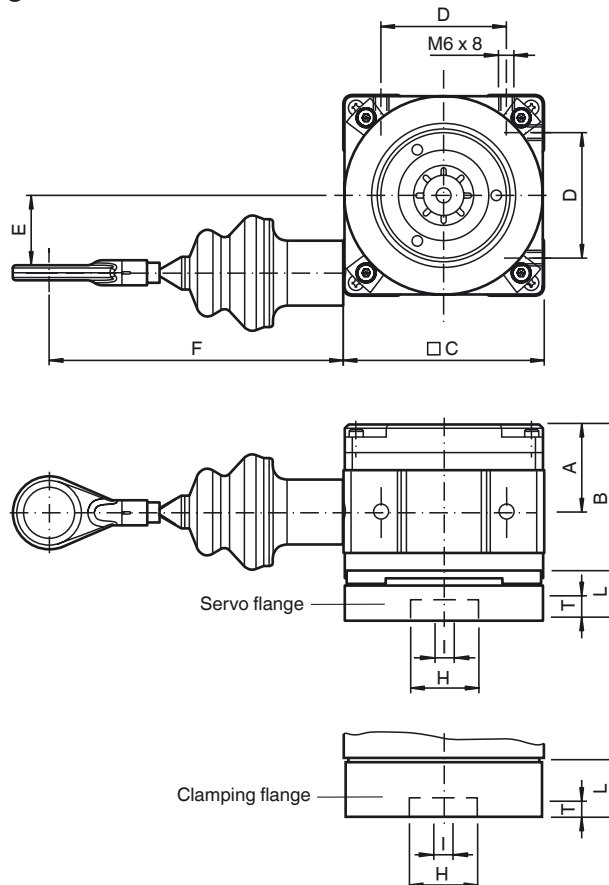
Optional accessories	#272502 SL-BCA Ball for ball joint
----------------------	--

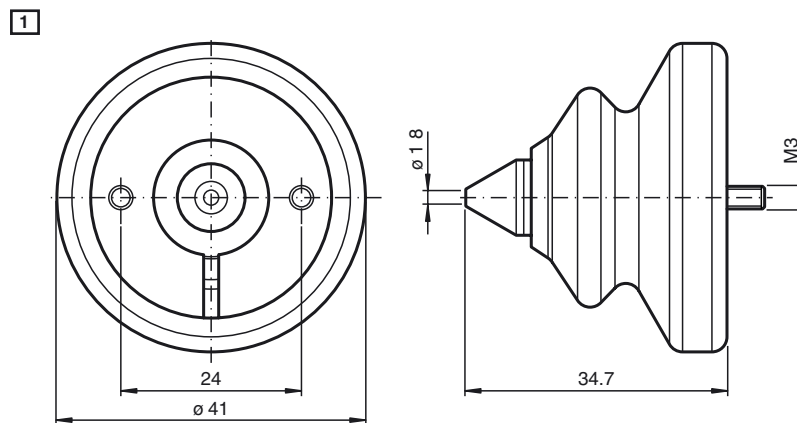
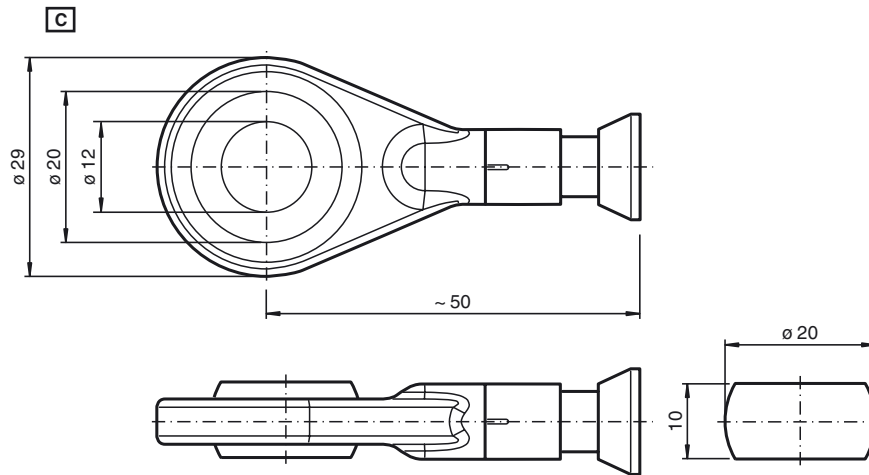
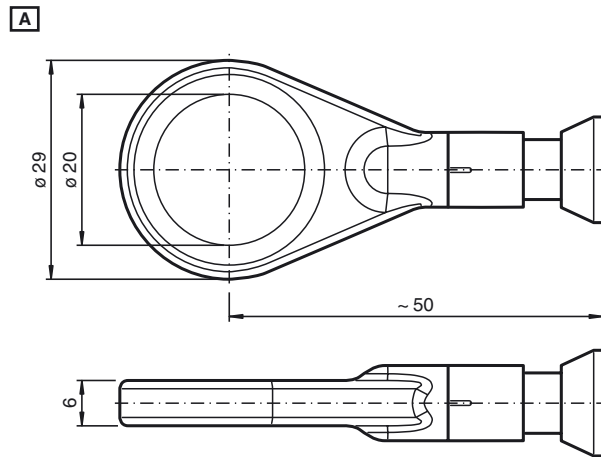
Dimensions

For design 80/130



For design 55





Variable Data and Dimensions

Technical Data	Design 55	Design 80		Design 130
Measuring length (in m)	1.25	02	03	05
Drum size (incl. cable) (in mm)	125	200		333.3
Spring retraction force (in N)	4-6	5-15		15-20
Weight (in kg)	0.5	1	1.1	2
Dimensions (in mm)				
A	32	35	45	59

Release date: 2016-06-09 10:12 Date of issue: 2016-06-09 1174841_eng.xml

B	47	58	68	86
C	55	80		130
D	46	50		80
E	19.5	31		52
F	85	110		112

Flange dimensions for adapting rotary encoders

Design	55	80	130	80	130	80	130
Flange type	Clamping flange	Servo flange				Clamping flange	
Designation	X5	X1		X3		X2	
H (= flange Ø) (in mm)	20	50		33		36	
Clamping circuit Ø (in mm)	30	42		26		48	
I (= shaft Ø) (in mm)	6	6		6		10	
Wavelength (in mm)	15	10		11.5		20	
Dimensions (in mm)							
Length L	31	20		24	22	36.8	34.8
Depth D	23	3.8		3.8	3.8	10	10

Model Number

E C N 2 0 I L - - - - 1 - - - -

Flange type

- X1** Servo flange Ø 50 mm/42 mm/3 x M4; shaft Ø 6 mm x 10 mm
- X2** Clamping flange Ø 36/48 mm/3 x M4; shaft; Ø 10 mm x 20 mm
- X3** Servo flange Ø 33 mm/26 mm/4 x M3; shaft Ø 6 mm x 11.5 mm
- X5** Clamping flange Ø 20 mm/30 mm/3 x M3; shaft Ø 6x15 mm (only with length of measuring cable A1)

Material

- A** STD anodized aluminum
- H** Aluminum, Hart Coat coating

Cable mounts

- A** Ring PE carrier
- C** Ball joint

Length of measuring cable

- A1** 1.25 m (only with flange type X5)
- 02** 2 m
- 03** 3 m
- 05** 5 m